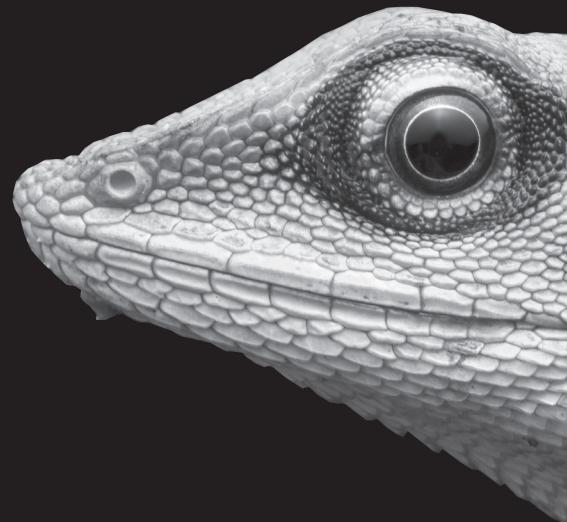


QUANTUM *FRAME*



The measuring system for volumes, dimensions, contours, shapes and sizes.
Logistic automation for high rack storage areas, shipping and production.

TECHNICAL FEATURES



QUANTUM *FRAME*

Technical features and **measuring areas**.



General Data

Maximal conveyor speed	up to 2 m/s
Minimal object distance	5 measurements
Output data	length, width, height, volume and orientation

Optical data

Number of beams	$S_{\text{vert}} + S_{\text{horiz}}$ max. 500
Distance of beams	5 mm, 10 mm, 25 mm
Readout time per beam	from 30 μ s
Wavelength	880 nm

Electrical Data

Normal voltage externally	230 V AC
Normal voltage internally	24 V DC
Power consumption	29 W (max. 120 W)

Mechanical data

Frame size	see section „dimensions“
Electrical cabinet dimension	380 mm x 300 mm x 210 mm
Circuit points	external electrical power supply communication interface: TCP/IP optional: PROFIBUS, RS232

Measurement range

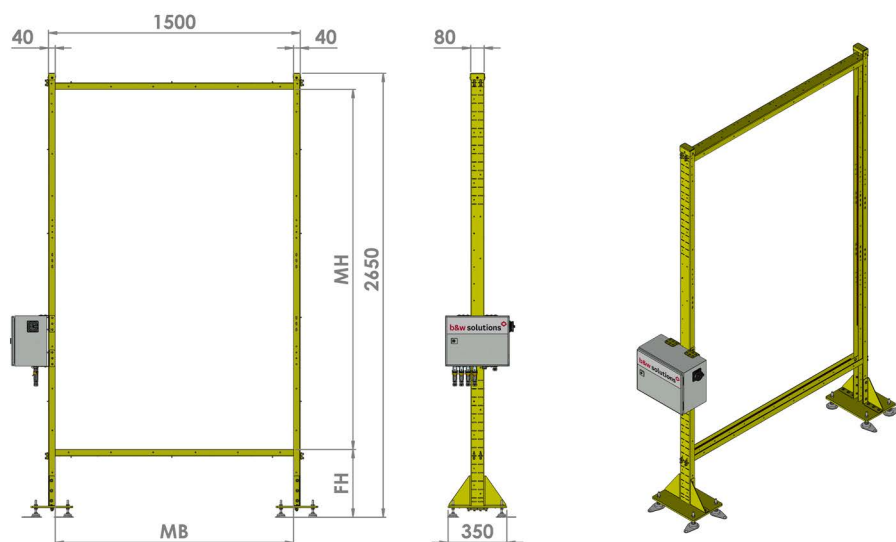
Length	modifiable, depends on conveyor speed
Width	100 mm - 3030 mm, depends on resolution
height	100 mm - 3030 mm, depends on resolution

QUANTUM FRAME

Abmessungen and beam distance.



Dimensions

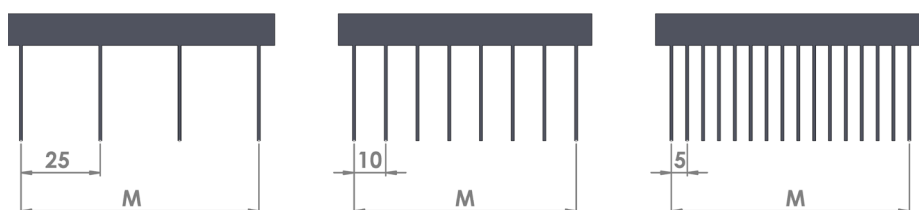


Dimensions

MH	measurement height	1600 mm	customizable
MB	measurement width	1300 mm	customizable
FH	foot height	individual customizable, in 50 mm steps dependent from MH max.	

Beam Distance

M max. measuring range



It should be noted that certain data are standardized. Further variations and specific deviations are possible.

QUANTUM *FRAME*

The measuring system for **logistic automation**.



KONTAKT:

b&w solutions GmbH
Adolf-Heim-Straße 11
74321 Bietigheim-Bissingen

Phone +49(0)7142/99384-10
Fax +49(0)7142/99384-30

E-Mail: contact@b-w-solutions.com
www.b-w-solutions.com

b&w solutions 