

# QUANTUM FRAME

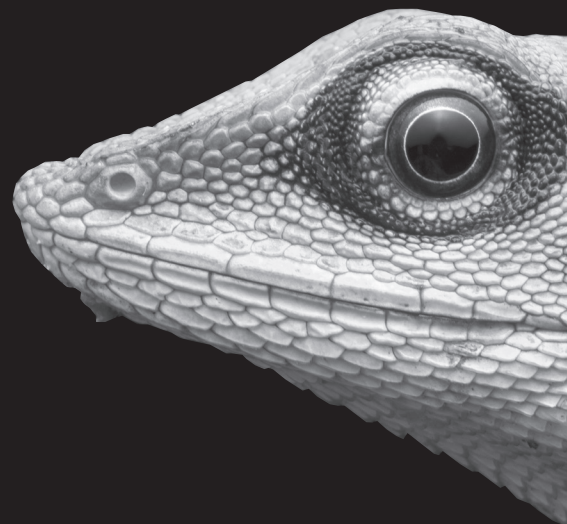


The measuring system for volumes, dimensions, contours, shapes and sizes.  
Logistics automation for high rack storage areas, shipping and production.



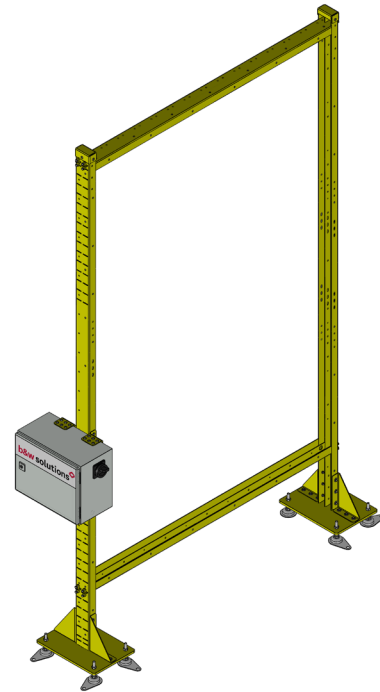
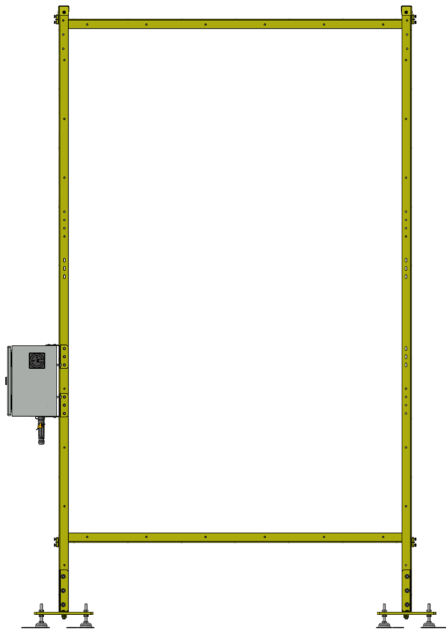
## INTELLIGENT | STABIL | SMART

- >>> Quality control for incoming and outgoing consignments.
- >>> Exact and fast identification in process of selection
- >>> Optimizing of cargo, storage and shipment processes
- >>> High level optimized costs



# QUANTUM FRAME

The measuring system for **logistic automation** at first sight.



## High level cost optimization

Through exact measuring of volume and dimensions, the load planning is perfected with our QUANTUM FRAME measuring system.



## Quality control for incoming and outgoing consignments

Damage detection – measuring of bulges, damages and incorrect packages are being detected.



## Selection and classification

Through exact measuring of volume, dimensions and contours shipments can be selected and classified during the material flow.

## Optimizing storage volume

Storage places will be given by exact identification of goods.

# QUANTUM FRAME

Most important **product information** in Detail.



## Product Features

- Solid measuring of length, width and height.  
Also measuring of position and orientation from objects in any form
- Real volume calculation
- Measuring of objects with different material, shape and surface
- Simple integration in any conveying system.  
QUANTUM FRAME is the perfect OEM Product
- Based on easy handling long MTBF

## Basic configuration

- Easy frame integration in all types of conveying systems
- Effortless “plug & play” commissioning

## Options

- Barcode scanner integration
- Professional industrial cameras for archival
- In-motion scales
- More options on request

## Detectional object forms

- Formless

## Interface

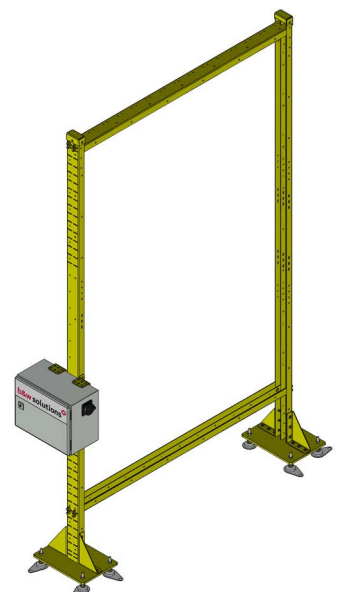
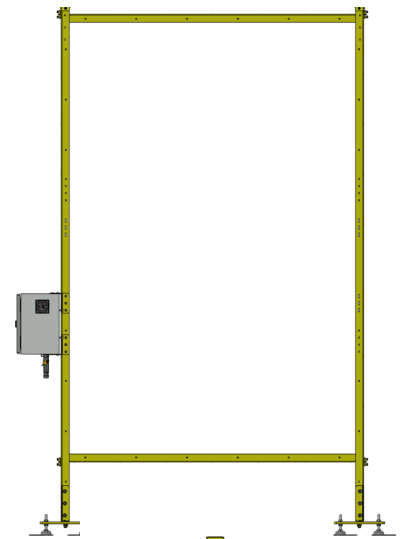
- RS232, TCP/IP, PROFIBUS, more on request

## Output data

- Length, width, height, volume and orientation

## Normal voltage

- 230 V AC





## Basic usage | measuring

FUNCTION	BENEFIT	USAGE
<ul style="list-style-type: none"><li>▪ Determining length, width, height and volume</li><li>▪ Measuring of any object forms</li></ul>	<ul style="list-style-type: none"><li>▪ Automatic inline measurement</li><li>▪ Robust, reliable and industrial</li><li>▪ Modular extensions</li><li>▪ Large measuring range</li><li>▪ All shapes and surfaces</li></ul>	<ul style="list-style-type: none"><li>▪ Registering incoming goods</li><li>▪ Documenting outgoing goods</li><li>▪ Master data acquisition</li><li>▪ Measuring of cartons and pallets</li><li>▪ Freight rate optimization</li><li>▪ Optimizing storage</li></ul>

## Additional options | checking contours

FUNCTION	BENEFIT	USAGE
<ul style="list-style-type: none"><li>▪ Measuring object shape</li><li>▪ Measuring of bulges</li><li>▪ Classification of objects</li><li>▪ Selection by means of different object shapes</li><li>▪ Differentiation of various object shapes</li></ul>	<ul style="list-style-type: none"><li>▪ Ensure system availability</li><li>▪ Ability of conveyance</li><li>▪ Avoidance of distractions</li></ul>	<ul style="list-style-type: none"><li>▪ Inbound</li><li>▪ Acquisition of return shipment</li><li>▪ Automatic selection within conveying system</li><li>▪ High rack storage</li></ul>

## Additional options | weight determination

FUNCTION	BENEFIT	USAGE
<ul style="list-style-type: none"><li>▪ Exact dynamic weight determination</li></ul>	<ul style="list-style-type: none"><li>▪ Weight determination in combination with volume measuring</li></ul>	<ul style="list-style-type: none"><li>▪ Master data acquisition of incoming goods</li><li>▪ Freight cost optimization of outgoing goods</li></ul>

# QUANTUM *FRAME*

Things you should know about **b&w solutions GmbH**.

At our headquarters in Baden-Württemberg we develop, design and manufacture special machines, constructions and 3-D scanner measurement systems. For the food, liquid food and beverage industry we have developed fully automatic handle applicators. For the area of transport protection in the final or shipping packaging, we produce the world's first machines for full automatic filling of packaging chips (loose-fill) for shipping cartons. Our portfolio is supplemented by products of our sister company, Atlanta Germany GmbH, which is active in the field of packaging technology and transport security. The focus is based on the development, design and distribution of semi-and fully automatic stretch wrapping machines.

## Contact:

b&w solutions GmbH  
Adolf-Heim-Straße 11  
74321 Bietigheim-Bissingen  
Germany

E-Mail: [contact@b-w-solutions.com](mailto:contact@b-w-solutions.com)  
Phone +49(0)7142/99384-10  
Fax +49(0)7142/99384-30

[www.b-w-solutions.com](http://www.b-w-solutions.com) ■ [www.atlanta-deutschland.de](http://www.atlanta-deutschland.de)

